

EQUUS AGR-PUD PHASE ONE

A PLAT OF A PORTION OF SECTIONS 18 AND 19, TOWNSHIP 45 SOUTH, RANGE 42 EAST AND ALSO BEING A REPLAT OF ALL OF TRACTS 63, 92, 94 AND 95 AND 122 THROUGH 125, BLOCK 45, ALL OF TRACTS 2 THROUGH 4 AND 26 THROUGH 29, BLOCK 51, A PORTION OF TRACTS 62, 93, 120 AND 121, BLOCK 45, A PORTION OF TRACTS 1, 5, 6, 25 AND 30, BLOCK 51 AND A PORTION OF THE ROAD, DYKE AND DITCH RESERVATIONS, (HEREINAFTER REFERRED TO AS RIGHT-OF-WAY) LYING IN AND BORDERING BLOCKS 45 AND 51, ALL OF THE PALM BEACH FARMS COMPANY PLAT NO. 3, ACCORDING TO THE PLAT THEREOF AS RECORDED IN PLAT BOOK 2, PAGES 45 THROUGH 54 OF THE PUBLIC RECORDS OF PALM BEACH COUNTY, FLORIDA

PALM BEACH COUNTY, FLORIDA

JOHN A. GRANT, JR., INC.

CONSULTING ENGINEERS AND LAND SURVEYORS

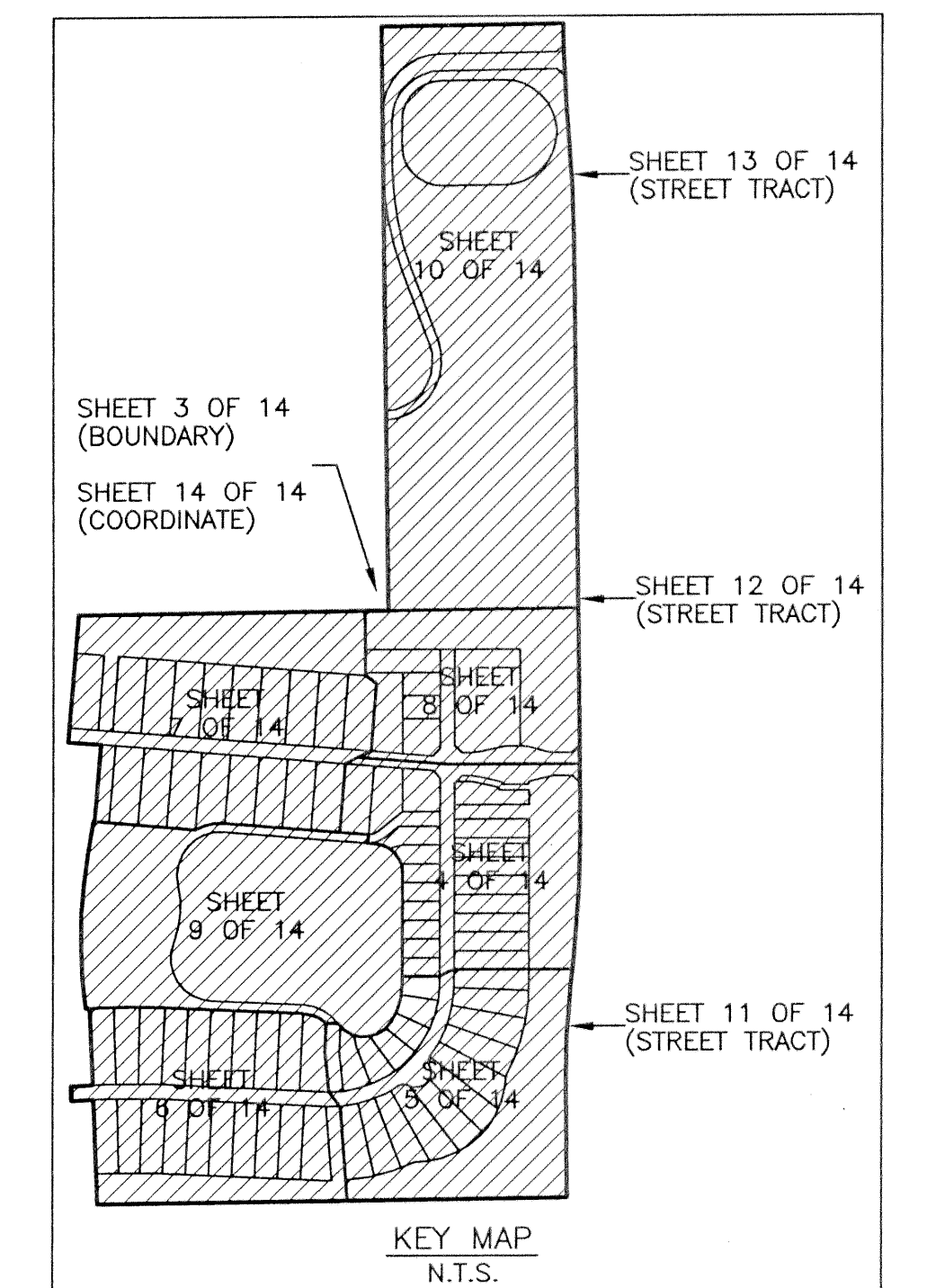
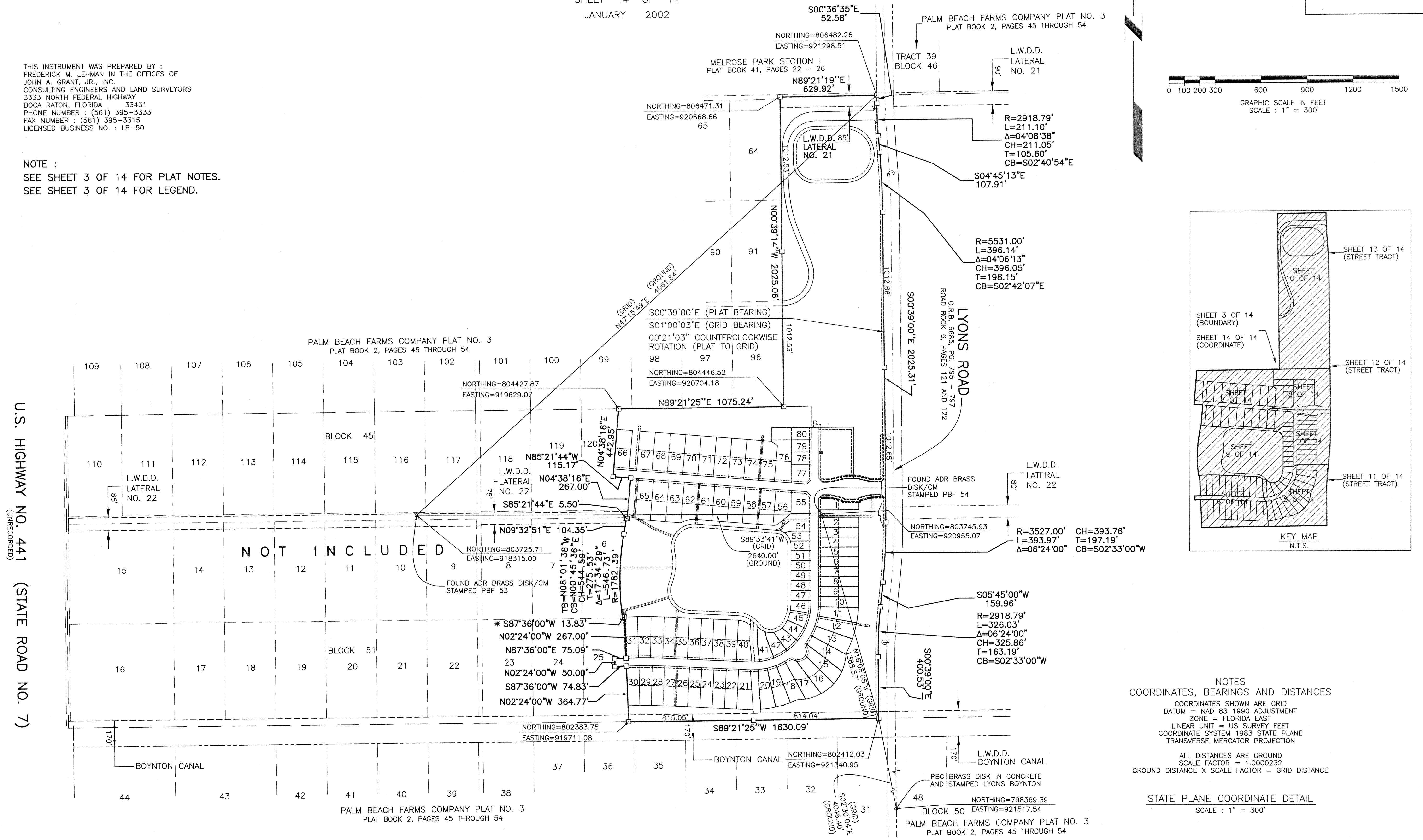
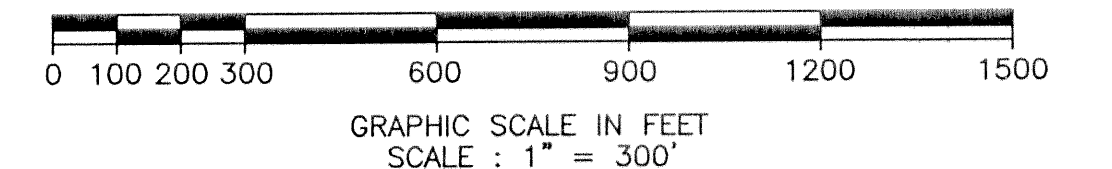
BOCA RATON, FLORIDA

SHEET 14 OF 14
JANUARY 2002

STATE OF FLORIDA
COUNTY OF PALM BEACH
THIS PLAT WAS FILED FOR
RECORD AT _____ M.
THIS _____ DAY OF
_____ A.D. 2002 AND DULY
RECORDED IN PLAT BOOK
_____ ON PAGES _____
AND _____
DOROTHY H. WILKEN
CLERK CIRCUIT COURT
BY : _____
DEPUTY CLERK

THIS INSTRUMENT WAS PREPARED BY :
FREDERICK M. LEHMAN IN THE OFFICES OF
JOHN A. GRANT, JR., INC.
CONSULTING ENGINEERS AND LAND SURVEYORS
3333 NORTH FEDERAL HIGHWAY
BOCA RATON, FLORIDA 33431
PHONE NUMBER : (561) 395-3333
FAX NUMBER : (561) 395-3315
LICENSED BUSINESS NO. : LB-50

NOTE :
SEE SHEET 3 OF 14 FOR PLAT NOTES.
SEE SHEET 3 OF 14 FOR LEGEND.



NOTES
COORDINATES, BEARINGS AND DISTANCES
COORDINATES SHOWN ARE GRID
DATUM = NAD 83 1990 ADJUSTMENT
ZONE = FLORIDA EAST
LINEAR UNIT = US SURVEY FEET
COORDINATE SYSTEM 1983 STATE PLANE
TRANSVERSE MERCATOR PROJECTION
ALL DISTANCES ARE GROUND
SCALE FACTOR = 1.0000232
GROUND DISTANCE X SCALE FACTOR = GRID DISTANCE
STATE PLANE COORDINATE DETAIL
SCALE : 1" = 300'

U.S. HIGHWAY NO. 441 (STATE ROAD NO. 7)
(UNRECORDED)

SUBDIVISION EQUUS AGR-PUD PHASE ONE
BOOK 97 PAGE 24
FLOOD ZONE B FLOOD MAP # 185A
QUAD # 49.50 ZONING AGR/PUD
SE 49.50 ZIP CODE 33437
TAZ 102B
PUD NAME

REVISED DATE : OCTOBER 31, 2002
REVISED DATE : SEPTEMBER 27, 2002
REVISED DATE : JULY 16, 2002
REVISED DATE : JUNE 18, 2002
REVISED DATE : JUNE 10, 2002
REVISED DATE : MAY 31, 2002
DATE : FEBRUARY 26, 2002
JOB NUMBER : JC-00-8500
FILE NAME : \\JAG7\CAD\UG8500\RECORD PLAT\RECORD PLAT.DWG
JLR